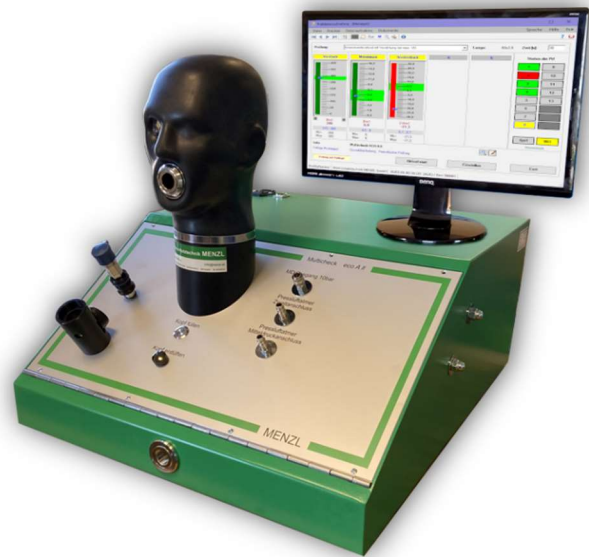


## ***Automated test bench with a small footprint for performing all of the required static and dynamic tests on full-face masks, lung-governed demand valves and SCBAs***



*Multicheck eco A II-S hooked up to a computer*

Multicheck eco A II-S is a computer-assisted, automated test bench with a small footprint that makes it easy to carry out all of the static and dynamic low-pressure, medium-pressure and high-pressure tests that need to be performed on full-face masks, lung-governed demand valves and SCBAs.

The fact that this test bench operates largely automatically not only guarantees that the highest standards are met in terms of equipment testing but also makes for utmost user-friendliness.

During equipment testing, the MENZL Equipment Management and Testing program automatically controls the re-

quired test procedures and pressure levels as well as the artificial lung, and records data in the same reliable and tamper-proof manner that all MENZL software products are renowned for.

With a view to reducing dead space and maximizing accuracy, lung-governed demand valves are connected to a dedicated port for static tests rather than to a mask or the dummy head.

Chemical protective suits (CPS) and CPS exhalation valves can be tested using accessories (sold separately).

### ***Scope of delivery***

- ❖ Multicheck eco A II-S
- ❖ Equipment Management and Testing program
- ❖ medium-pressure testing hose
- ❖ equipment connecting adapter (200 and 300 bar)
- ❖ high-pressure supply hose
- ❖ round-thread sealing plug
- ❖ sealing nipple for medium-pressure plug-in nipple
- ❖ silicone spray
- ❖ power cord and USB cable
- ❖ operator's manual

The computer system is NOT included in the scope of delivery. You can order it from us, or you can provide one that meets the system requirements.



*USB data port  
and power switch*



*connector for high-  
pressure supply hose*

### ***Possible tests***

- ❖ leak testing of full-face masks
- ❖ opening pressure of mask exhalation valves
- ❖ leak testing of lung-governed demand valves
- ❖ opening pressure of lung-governed demand valves
- ❖ first-breath activation pressure
- ❖ closing pressure of lung-governed demand valves
- ❖ dynamic tests with an artificial lung, with auto-adjustment of the lung
  - breathing tests at 40 x 2.5 l/min
  - breathing tests at 25 x 2.0 l/min
- ❖ static and dynamic high-pressure tests
- ❖ fully automatic high-pressure regulation, with auto-adjustment of the pressure according to equipment-testing requirements
  - pressure range: 0-330 bar
- ❖ static medium pressure
- ❖ dynamic medium pressure (during breathing)
- ❖ leak testing of SCBAs
- ❖ gauge-reading accuracy
- ❖ low-air alarm activation pressure
- ❖ leak testing of chemical protective suits (CPS)  
*(requires accessories – sold separately)*

Errors and omissions excepted! Technical specifications subject to change without notice!



## Specifications

- ❖ dimensions (w x d x h) ..... 600 x 700 x 300 mm  
(excl. dummy head)
- ❖ weight ..... approx. 40 kg
- ❖ power supply ..... 230 V, 50 Hz
- ❖ power consumption ..... 700 W
- ❖ compressed-air supply ..... 300 bar (EN 12021)
- ❖ low-pressure transducer .....  $\pm 30$  mbar
- ❖ medium-pressure transducer ..... 0 – 16 bar
- ❖ high-pressure transducer ..... 0 – 400 bar
- ❖ accuracy of transducers .....  $\pm 0.5$  %
- ❖ medium-pressure connector ..... euro coupling
- ❖ high-pressure connector ..... DIN 477
- ❖ equipment connector ..... round thread (EN 148-1)  
(many adapters available on request)

## The MENZL Equipment Management and Testing program

With our program, which we develop in-house, you can, inter alia, do the following:

- ❖ manage program users and user privileges
- ❖ manage equipment owners
- ❖ manage individuals associated with equipment owners
- ❖ manage type-specific test preferences
- ❖ manage test procedures
- ❖ manage equipment types (incl. test intervals)
- ❖ manage equipment data (incl. dates when tests are due)
- ❖ manage equipment with limited service life
- ❖ perform equipment tests and save the recorded data
- ❖ manage stored data on equipment tests
- ❖ print test reports
- ❖ search for equipment that is due for testing
- ❖ use comprehensive reporting and statistics features
- ❖ create tests that can be activated if needed
- ❖ manage turnouts and training sessions
- ❖ manage any kind of equipment (*option*)
- ❖ make and manage lists of equipment to be tested (*option*)
- ❖ use barcodes to tag and identify pieces of equipment
- ❖ make user reports
- ❖ export reports in a variety of formats
- ❖ export and import data (standardized CSV format)
- ❖ synchronize data (requires a central point of testing)
- ❖ back up data to USB drives
- ❖ download program updates via an FTP connection
- ❖ use signature pads to sign documents electronically
- ❖ carry out and manage external cylinder fillings
- ❖ carry out and manage external equipment tests
- ❖ hire out equipment (*option*)
- ❖ make lists of equipment given out (*option*)
- ❖ carry out cylinder fillings and cylinder pressure tests (*option*)
- ❖ set up and manage central points of testing (*option*)
- ❖ manage your stock and do invoicing (*option*)

## Optional extras and upgrades

- ❖ low-pressure transducer  $\pm 100$  mbar
- ❖ manual medium-pressure adjustment  
0 – 5 bar
- ❖ medium-pressure transducer 0 – 25 bar
- ❖ second-load simulator with either manual or automatic activation
- ❖ pneumatic mask tightener
- ❖ implement for testing two-point helmet-masks
- ❖ built-in touchscreen PC
- ❖ slide-out keyboard tray
- ❖ carrying handles
- ❖ under-unit cabinet with adjustable feet

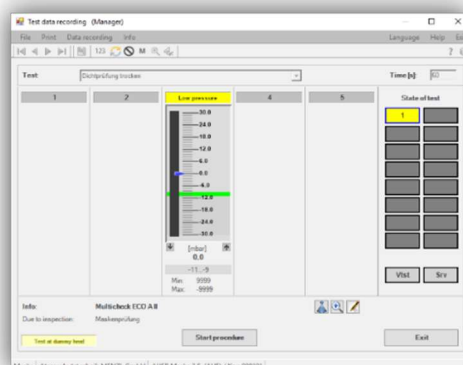
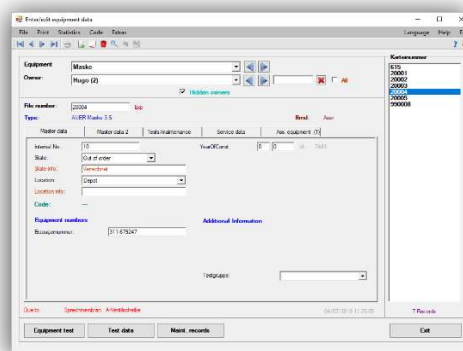
## Program options (non-exhaustive list)

- ❖ managing any kind of equipment
- ❖ managing cylinder fillings
- ❖ hiring out equipment
- ❖ making lists of equipment given out
- ❖ making lists of equipment to be tested
- ❖ managing central points of testing
- ❖ managing your stock and invoicing

**Program options are sold separately!**

## Available UI languages

- ❖ English ❖ German ❖ Spanish ❖ Czech



Errors and omissions excepted! Technical specifications subject to change without notice!

