

Automated computer-assisted tester with a fully automatic pneumatic mask tightener for static tests on masks and lung-governed demand valves

Computer-assisted or manual operation and data recording



Multitest 720M plus lets you efficiently and conveniently perform static tests on respiratory protective masks and lung-governed demand valves (LGDV). You can operate it in either of two ways:

- ❖ in a computer-assisted automated manner
- ❖ manually by controlling the tester via a joystick

When you use Multitest 720M plus in conjunction with the included Equipment Management program, the following steps are carried out fully automatically during computer-assisted testing:

- ❖ The pneumatic tightener tightens the mask so as to ensure that it sits perfectly on the inflatable dummy head.
- ❖ The tester automatically tests the mask according to the requirements specified for the type of mask in question.
- ❖ The Equipment Management program saves and documents the data recorded during testing.
- ❖ Once testing is complete, the mask tightener releases the mask, which can then easily be taken off the dummy head.

Possible tests

- ❖ full-face masks – leak test (normal/positive pressure)
- ❖ full-face masks – exhalation-valve opening pressure
- ❖ LGDVs – leak test (with or without medium pressure)
- ❖ positive-pressure LGDVs – closing pressure
- ❖ SCBAs – static medium pressure

Medium-pressure tests require a computer.

Optional accessories for leak testing the valves of chemical protective suits with Multitest 720M plus are available on request.



Pneumatically tightened mask on dummy head



Pneumatic mask tightener with the stainless-steel holder for two-point helmet masks and docking adapters

(Holder and adapters sold separately.)

Other available models

- ❖ Multitest 720 plus (no pressure indicator)..... **330-591**
- ❖ Multitest 720D plus (digital pressure indicator)..... **330-593**

Multitest 720 plus requires a computer for equipment testing.

The electro-pneumatic mask tightener is designed for masks with five-point head harnesses. Two-point helmet masks can be docked and tested in conjunction with an optional stainless-steel mask holder, and if necessary optional docking adapters.

During computer-assisted operation, the feature-packed yet easy-to-use Equipment Management program, which MENZL develops in-house, not only controls the execution of the automated test procedures but also guarantees the accurate and tamper-proof documentation of the data recorded by the pressure transducers, making Multitest 720M plus a particularly operator-friendly mask tester that stands out for the quality it offers in terms of equipment testing and data documentation.

In manual mode, the mask tightener and the execution of tests are controlled by means of a joystick, and you need to record data by taking the readings of the low-pressure gauge. Its 100-mm diameter and fine graduation guarantee perfect accuracy. Moreover, there is a zero-offset calibration screw.

Scope of delivery

- ❖ Multitest 720M plus (incl. power cord and USB cable)
- ❖ Equipment Management program (v. 5, excl. cylinder filling functionality)
- ❖ protective hood and silicone spray for the dummy head
- ❖ adapter (round thread to dummy-head mouth port)
- ❖ mask sealing adapter (round thread)
- ❖ sealing plug for the LGDV hose
- ❖ operator's manual

The computer system is NOT included in the scope of delivery. You can order it from us, or you can provide one that meets the system requirements stated by us.

Specifications

- ❖ dimensions (w × d × h) 500 × 300 × 450 mm
- ❖ weight approx. 20 kg
- ❖ power supply/consumption 230 V, 50 Hz/100 W
- ❖ low-pressure gauge ±30 mbar¹ (cl. 1.6)
- ❖ low-pressure transducer ±30 mbar (cl. 0.5)
- ❖ medium-pressure transducer 0 – 16 bar (cl. 0.5)
- ❖ low-pressure port round thread (EN 148-1)
- ❖ medium-pressure ports Euro coupling/nipple

¹) Units for international markets. Units for the Austrian market come with a ±20 mbar low-pressure gauge.

Air of the quality prescribed for testing respiratory protective equipment (EN 12021) needs to be supplied to the tester at a pressure of 5 to 10 bar.

Please note: Optional accessories are sold separately.

Errors and omissions excepted! Technical specifications subject to change without notice!



Accessories

Mask sealing adapters



MSA plug-in connector	330-015
MSA AutoMaXX	330-150
Threaded connector M45x3	330-016
Dräger plug-in connector	330-017
Interspiro plug-in connector	330-018
Interspiro Click	330-131
Interspiro Inspire	330-494
Plug-in connector ESA	330-187

LGDV testing adapters



MSA plug-in connector	330-011
MSA AutoMaXX	330-149
Threaded connector M45x3	330-012
Dräger plug-in connector	330-013
Interspiro plug-in connector	330-014
Interspiro Click	330-162
Interspiro Inspire	330-498
Plug-in connector ESA	330-175

Accessories for testing two-point helmet masks



Helmet-mask holder for mask tightener (for MSA and Dräger masks – Gallet system)	330-126
MSA (Avon/Schuberth) adapters for art. no. 330-126	330-127
Interspiro (Heros) adapters for art. no. 330-126	330-128
Helmet-mask holder for installation on dummy head (for Dräger and MSA masks)	330-210
Helmet-mask holder for installation on dummy head (for Interspiro masks)	330-522

The Equipment Management program

Program features

With our program, which we develop in-house, you can, inter alia, do the following:

- ❖ manage program users and user permissions
- ❖ manage equipment owners
- ❖ manage individuals associated with equipment owners
- ❖ manage type-specific test preferences
- ❖ manage test procedures
- ❖ manage equipment types (incl. test intervals)
- ❖ manage equipment data (incl. dates when tests are due)
- ❖ manage equipment with a limited service life
- ❖ perform equipment tests and save the recorded data
- ❖ manage stored data on equipment tests
- ❖ print test reports
- ❖ search for equipment that is due for testing
- ❖ use comprehensive reporting and statistics features
- ❖ create tests that can be activated if needed
- ❖ manage turnouts and training sessions
- ❖ manage any kind of equipment (*option*)
- ❖ make and manage lists of equipment to be tested (*option*)
- ❖ use barcodes to tag and identify pieces of equipment
- ❖ create user reports
- ❖ export reports in a variety of formats
- ❖ export and import data (standardized CSV format)
- ❖ collate data (*requires a central point of testing*)
- ❖ make and manage lists of equipment given out (*option*)
- ❖ set up and manage central points of testing (*option*)
- ❖ download program updates via an FTP connection
- ❖ capture electronic signatures by means of a signature pad

- ❖ back up data to USB drives
- ❖ perform and manage external cylinder fillings
- ❖ perform and manage external equipment tests
- ❖ hire out equipment (*option*)
- ❖ fill and pressure test cylinders (*option*)
- ❖ manage stock and do invoicing (*option*)

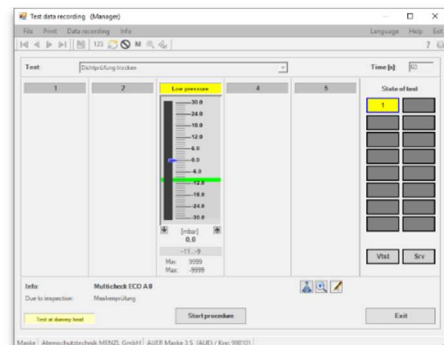
Program options (non-exhaustive list)

- ❖ managing any kind of equipment
- ❖ performing/managing cylinder fillings
- ❖ hiring out equipment
- ❖ making/managing lists of equipment given out
- ❖ making/managing lists of equipment to be tested
- ❖ setting up/managing central points of testing
- ❖ managing stock and doing invoicing

Program options are sold separately!

Available UI languages

- ❖ English
- ❖ German
- ❖ Spanish
- ❖ Czech



Errors and omissions excepted! Technical specifications subject to change without notice!

