

Automated computer-assisted twin tester with fully automatic pneumatic mask tighteners for static tests on masks



Multitest 720M twin

Offering the top quality and operator-friendliness typical of MENZL equipment testers, Multitest 720 twin allows you to efficiently and conveniently carry out all of the static tests that need to be performed on respiratory protective masks.

The twin tester comes with two fully automatic pneumatic tighteners for masks with five-point head harnesses. Two-point helmet masks can be docked and tested in conjunction with an optional stainless-steel holder for two-point helmet masks, and if necessary optional docking adapters.

The mask tighteners make it easy to swap masks quickly and guarantee that they sit properly on the dummy head.

Since you can test one mask and, simultaneously, prepare another one for testing, you will be able to test a maximum of masks in a minimum of time. As a result of this and because it is capable of operating in an automated computer-assisted manner, Multitest 720 twin meets the highest de-

mands in terms of efficiency, the quality of equipment testing and data documentation. What is more, it could not be easier to use: There is a joystick for adjusting the size of the dummy head. During mask testing, the feature-packed yet easy-to-use Equipment Management program, which we develop in-house, not only controls the execution of the automated test procedures but also guarantees the tamper-proof documentation of the data recorded by the pressure transducer, which has an accuracy class of 0.5.

Available models

Multitest 720 twin: Automated computer-assisted twin tester with fully automatic pneumatic mask tighteners for performing tests on respiratory protective masks. Requires two PCs for testing.

Multitest 720M twin: Has the same features as Multitest 720 twin but comes with built-in low-pressure gauges, making it possible to operate the tester manually and perform tests without PCs.

Possible tests

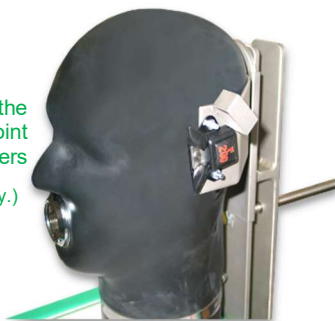
- ❖ full-face masks – leak test (normal/positive pressure)
- ❖ full-face masks – exhalation-valve opening pressure



Pneumatically tightened mask on dummy head

Pneumatic mask tightener with the stainless-steel holder for two-point helmet masks and docking adapters

(Holder and adapters sold separately.)



Scope of delivery

- ❖ Multitest 720 twin or Multitest 720M twin
- ❖ Equipment Management program (v. 5, excl. cylinder filling functionality)
- ❖ protective hood and silicone spray for the dummy head
- ❖ mask sealing adapter (round thread)
- ❖ adapter (round thread to dummy-head mouth port)
- ❖ sealing plug for the LGDV hose
- ❖ power cord and USB cable
- ❖ operating instructions

The computer systems are NOT included in the scope of delivery. You can order them from us, or you can provide systems that meet the system requirements stated by us.

Specifications

- ❖ dimensions (w × d × h) 750 × 300 × 450 mm
- ❖ weight approx. 40 kg
- ❖ power supply/consumption 230 V, 50 Hz/100 W
- ❖ low-pressure transducer ±30 mbar (cl. 0.5)
- ❖ low-pressure ports round thread (EN 148-1)
- ❖ medium-pressure ports Euro nipple

Air of the quality prescribed for testing respiratory protective equipment (EN 12021) needs to be supplied to the tester at a pressure of 5 to 10 bar.

Article numbers

- ❖ Multitest 720 twin **330-728**
- ❖ Multitest 720M twin **330-704**

Please note: Optional accessories are sold separately.

Errors and omissions excepted! Technical specifications subject to change without notice!



Accessories

Mask sealing adapters



MSA plug-in connector	330-015
MSA AutoMaXX	330-150
Threaded connector M45x3	330-016
Dräger plug-in connector	330-017
Racal plug-in connector	330-130

Interspiro plug-in connector	330-018
Interspiro Click	330-131
Interspiro Inspire	330-494
Plug-in connector ESA	330-187
Round thread	330-010

Accessories for testing two-point helmet masks



Helmet-mask holder for mask tightener (for MSA and Dräger masks – Gallet system)	330-126
MSA (Avon/Schuberth) adapters for art. no. 330-126	330-127
Interspiro (Heros) adapters for art. no. 330-126	330-128
Helmet-mask holder for installation on dummy head (for Dräger and MSA masks)	330-210
Helmet-mask holder for installation on dummy head (for Interspiro masks)	330-522

The Equipment Management program

Program features

With our program, which we develop in-house, you can, inter alia, do the following:

- ❖ manage program users and user permissions
- ❖ manage equipment owners
- ❖ manage individuals associated with equipment owners
- ❖ manage type-specific test preferences
- ❖ manage test procedures
- ❖ manage equipment types (incl. test intervals)
- ❖ manage equipment data (incl. dates when tests are due)
- ❖ manage equipment with a limited service life
- ❖ perform equipment tests and save the recorded data
- ❖ manage stored data on equipment tests
- ❖ print test reports
- ❖ search for equipment that is due for testing
- ❖ use comprehensive reporting and statistics features
- ❖ create tests that can be activated if needed
- ❖ manage turnouts and training sessions
- ❖ manage any kind of equipment (*option*)
- ❖ make and manage lists of equipment to be tested (*option*)
- ❖ use barcodes to tag and identify pieces of equipment
- ❖ create user reports
- ❖ export reports in a variety of formats
- ❖ export and import data (standardized CSV format)
- ❖ collate data (*requires a central point of testing*)
- ❖ make and manage lists of equipment given out (*option*)
- ❖ set up and manage central points of testing (*option*)
- ❖ download program updates via an FTP connection
- ❖ capture electronic signatures by means of a signature pad

- ❖ back up data to USB drives
- ❖ perform and manage external cylinder fillings
- ❖ perform and manage external equipment tests
- ❖ hire out equipment (*option*)
- ❖ fill and pressure test cylinders (*option*)
- ❖ manage stock and do invoicing (*option*)

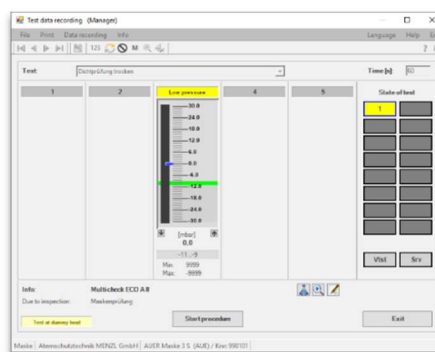
Program options (non-exhaustive list)

- ❖ managing any kind of equipment
- ❖ performing/managing cylinder fillings
- ❖ hiring out equipment
- ❖ making/managing lists of equipment given out
- ❖ making/managing lists of equipment to be tested
- ❖ setting up/managing central points of testing
- ❖ managing stock and doing invoicing

Program options are sold separately!

Available UI languages

- ❖ English
- ❖ German
- ❖ Spanish
- ❖ Czech



Errors and omissions excepted! Technical specifications subject to change without notice!

