

Computer-assisted equipment tester for static tests on full-face masks and lung-governed demand valves as well as static medium-pressure and high-pressure tests on SCBAs

Data recording by means of a computer or manually via pressure gauges



With just four controls, Multitest plus Pult HD ME allows you to carry out not only all of the static tests that need to be performed on full-face masks and lung-governed demand valves (LGDV) but also static medium-pressure and high-pressure tests on SCBAs in an efficient and convenient manner.

The tester is equipped with electronic pressure transducers, allowing you to connect it to a PC and benefit from outstanding quality in terms of equipment testing and data documentation.

Multitest plus Pult HD ME is operated manually, but you can record and manage data in a computer-assisted manner via the feature-packed Equipment Management program.

You can, however, also use the tester without a computer and record data via the pressure gauges. They are 100 mm in diameter and have finely graduated scales, making it easy to take pressure readings with perfect accuracy. Furthermore, the

low-pressure gauge has a zero-offset calibration screw.

The tester comes with a round-thread equipment port. Thanks to a broad range of optional adapters (see accessories), it is also possible to test a wide variety of equipment with other connector/port types from a large number of manufacturers.

The required levels of positive and negative pressure as well as the necessary flow rates for opening-pressure tests and closing-pressure tests are supplied by the built-in pump.

LGDVs are connected to the equipment port for testing, while masks with five-point head harnesses are strapped onto the inflatable dummy head. The head, which comes with a clamp for fastening it to a table or a workbench, guarantees that the masks sit properly on a human-like face during testing. In combination with optional accessories, Multitest plus Pult HD ME can also be used for testing two-point helmet masks.

Possible tests

- ❖ full-face masks – leak test
- ❖ full-face masks – exhalation-valve opening pressure
- ❖ lung-governed demand valves – leak test
- ❖ lung-governed demand valves – opening pressure
- ❖ lung-governed demand valves – closing pressure
- ❖ SCBAs – static medium pressure
- ❖ SCBAs – high-pressure leak test
- ❖ SCBAs – pressure-gauge accuracy
- ❖ SCBAs – low-air-alarm activation pressure

The following tests require optional accessories:

- ❖ chemical protective suits – leak test
- ❖ chemical protective suits – leak test of the suit valves

Scope of delivery

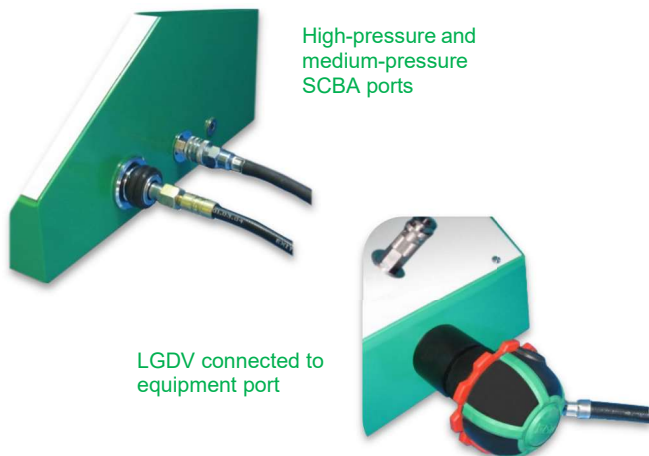
- ❖ Multitest plus Pult HD ME (incl. power cord and USB cable)
- ❖ dummy head (incl. filling valve and clamp)
- ❖ Equipment Management program (v. 5, excl. cylinder filling functionality)
- ❖ mask testing hose (round thread)
- ❖ high-pressure testing hose (incl. 300-bar testing adapter)
- ❖ sealing plug for the LGDV hose
- ❖ silicone spray
- ❖ operating instructions

The computer system is NOT included in the scope of delivery. You can order it from us, or you can provide one that meets the system requirements stated by us.

Specifications

- ❖ dimensions (w × d × h).....420 × 400 × 220 mm
- ❖ housingtexture-painted aluminium
- ❖ weight..... approx. 11 kg
- ❖ power supply/consumption.....24 V DC/10 W
- ❖ low-pressure gauge..... ±30 mbar¹ (cl. 1.6)
- ❖ low-pressure transducer.....±30 mbar (cl. 0.5)
- ❖ medium-pressure gauge0 – 16 bar (cl. 1.0)
- ❖ medium-pressure transducer0 – 16 bar (cl. 0.5)
- ❖ high-pressure gauge0 – 400 bar (cl. 1.6)
- ❖ high-pressure transducer0 – 400 bar (cl. 0.5)
- ❖ equipment port round thread (EN 148-1)
- ❖ medium-pressure ports Euro coupling/nipple
- ❖ high-pressure portDIN 477

¹) Units for international markets. Units for the Austrian market come with a ±20 mbar low-pressure gauge.



High-pressure and medium-pressure SCBA ports

LGDV connected to equipment port

Please note: Optional accessories are sold separately.

Errors and omissions excepted! Technical specifications subject to change without notice!



Accessories

Mask testing adapters



MSA plug-in connector	330-048
MSA AutoMaXX	330-152
Threaded connector M45x3	330-050
Dräger plug-in connector	330-049
Interspiro plug-in connector	330-051
Interspiro Click	330-168
Interspiro Inspire	330-496
Plug-in connector ESA	330-178

LGDV testing adapters



MSA plug-in connector	330-011
MSA AutoMaXX	330-149
Threaded connector M45x3	330-012
Dräger plug-in connector	330-013
Interspiro plug-in connector	330-014
Interspiro Click	330-162
Interspiro Inspire	330-498
Plug-in connector ESA	330-175

Accessories for testing two-point helmet masks



Helmet-mask holder – standard model	330-233
MSA (Avon/Schuberth) adapters for art. no. 330-233	330-127
Interspiro (Heros) adapters for art. no. 330-233	330-128
Helmet-mask holder for installation on dummy head (for Dräger and MSA masks)	330-210
Helmet-mask holder for installation on dummy head (for Interspiro masks)	330-522

The Equipment Management program

Program features

With our program, which we develop in-house, you can, inter alia, do the following:

- ❖ manage program users and user permissions
- ❖ manage equipment owners
- ❖ manage individuals associated with equipment owners
- ❖ manage type-specific test preferences
- ❖ manage test procedures
- ❖ manage equipment types (incl. test intervals)
- ❖ manage equipment data (incl. dates when tests are due)
- ❖ manage equipment with a limited service life
- ❖ perform equipment tests and save the recorded data
- ❖ manage stored data on equipment tests
- ❖ print test reports
- ❖ search for equipment that is due for testing
- ❖ use comprehensive reporting and statistics features
- ❖ create tests that can be activated if needed
- ❖ manage turnouts and training sessions
- ❖ manage any kind of equipment (*option*)
- ❖ make and manage lists of equipment to be tested (*option*)
- ❖ use barcodes to tag and identify pieces of equipment
- ❖ create user reports
- ❖ export reports in a variety of formats
- ❖ export and import data (standardized CSV format)
- ❖ collate data (*requires a central point of testing*)
- ❖ make and manage lists of equipment given out (*option*)
- ❖ set up and manage central points of testing (*option*)
- ❖ download program updates via an FTP connection
- ❖ capture electronic signatures by means of a signature pad

- ❖ back up data to USB drives
- ❖ perform and manage external cylinder fillings
- ❖ perform and manage external equipment tests
- ❖ hire out equipment (*option*)
- ❖ fill and pressure test cylinders (*option*)
- ❖ manage stock and do invoicing (*option*)

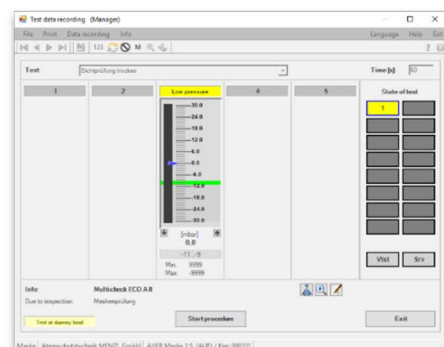
Program options (non-exhaustive list)

- ❖ managing any kind of equipment
- ❖ performing/managing cylinder fillings
- ❖ hiring out equipment
- ❖ making/managing lists of equipment given out
- ❖ making/managing lists of equipment to be tested
- ❖ setting up/managing central points of testing
- ❖ managing stock and doing invoicing

Program options are sold separately!

Available UI languages

- ❖ English
- ❖ German
- ❖ Spanish
- ❖ Czech



Errors and omissions excepted! Technical specifications subject to change without notice!

