

## Computer-assisted equipment tester for static tests on full-face masks and lung-governed demand valves as well as static medium-pressure tests on SCBAs

Data recording by means of a computer or manually via pressure gauges



Multitest plus Pult OÖ ME lets you carry out not only all of the static tests that need to be performed on full-face masks and lung-governed demand valves (LGDV) but also static medium-pressure tests on SCBAs in an efficient and convenient way.

The tester is equipped with electronic pressure transducers, allowing you to connect it to a PC and benefit from outstanding quality in terms of equipment testing and data documentation.

Multitest plus Pult OÖ ME is operated manually, but you can record and manage data in a computer-assisted manner via the feature-packed Equipment Management program.

You can, however, also use the tester without a computer and record data via the pressure gauges. They are 100 mm in diameter and have finely graduated scales, making it easy to take pressure readings with perfect accuracy. Moreover, the low-pressure gauge has a zero-offset calibration screw.

### Possible tests

- ❖ full-face masks – leak test
- ❖ full-face masks – exhalation-valve opening pressure
- ❖ lung-governed demand valves – leak test
- ❖ lung-governed demand valves – opening pressure
- ❖ lung-governed demand valves – closing pressure
- ❖ SCBAs – static medium pressure

### The following tests require optional accessories:

- ❖ chemical protective suits – leak test
- ❖ chemical protective suits – leak test of the suit valves



Mask testing



Holder for two-point helmet masks (sold separately)



Power jack and USB port

The tester comes with a round-thread equipment port. Thanks to a broad range of optional adapters (see accessories), it is also possible to test a wide variety of equipment with other connector/port types from a large number of manufacturers.

The required levels of positive and negative pressure as well as the necessary flow rates for opening-pressure tests and closing-pressure tests are supplied by the built-in pump.

LGDVs are connected to the equipment port for testing, while masks with five-point head harnesses are strapped onto the dummy head, which is mounted on the housing of the tester. The head guarantees that the masks sit properly on a human-like face during testing. Its size can be adjusted via a joystick, and it has a measuring line in the mouth area for data recording. In combination with optional accessories, the tester can also be used for performing tests on two-point helmet masks.

### Scope of delivery

- ❖ Multitest plus Pult OÖ
- ❖ Equipment Management program (v. 5, excl. cylinder filling functionality)
- ❖ mask sealing adapter (round thread)
- ❖ sealing plug for the LGDV hose
- ❖ silicone spray, power adapter (230/24 V) and USB cable
- ❖ operating instructions

The computer system is NOT included in the scope of delivery. You can order it from us, or you can provide one that meets the system requirements stated by us.

### Specifications

- ❖ dimensions (w × d × h)..... 420 × 400 × 220 mm<sup>1</sup>
- ❖ housing .....texture-painted aluminium
- ❖ weight ..... approx. 16 kg
- ❖ power supply/consumption ..... 24 V DC/10 W
- ❖ low-pressure gauge ..... ±30 mbar<sup>2</sup> (cl. 1.6)
- ❖ low-pressure transducer ..... ±30 mbar (cl. 0.5)
- ❖ medium-pressure gauge ..... 0 – 16 bar (cl. 1.0)
- ❖ medium-pressure transducer ..... 0 – 16 bar (cl. 0.5)
- ❖ equipment port ..... round thread (EN 148-1)
- ❖ medium-pressure ports ..... Euro coupling/nipple

1) excl. dummy head

2) Units for international markets. Units for the Austrian market come with a ±20 mbar low-pressure gauge.

Air of the quality prescribed for testing respiratory protective equipment (EN 12021) needs to be supplied to the tester at a pressure of 5 to 10 bar.

**Please note: Optional accessories are sold separately.**

Errors and omissions excepted! Technical specifications subject to change without notice!



## Accessories

### Mask sealing adapters



MSA plug-in connector	<b>330-015</b>
MSA AutoMaXX	<b>330-150</b>
Threaded connector M45x3	<b>330-016</b>
Dräger plug-in connector	<b>330-017</b>
Interspiro plug-in connector	<b>330-018</b>
Interspiro Click	<b>330-131</b>
Interspiro Inspire	<b>330-494</b>
Plug-in connector ESA	<b>330-187</b>

### LGDV testing adapters



MSA plug-in connector	<b>330-011</b>
MSA AutoMaXX	<b>330-149</b>
Threaded connector M45x3	<b>330-012</b>
Dräger plug-in connector	<b>330-013</b>
Interspiro plug-in connector	<b>330-014</b>
Interspiro Click	<b>330-162</b>
Interspiro Inspire	<b>330-498</b>
Plug-in connector ESA	<b>330-175</b>

### Accessories for testing two-point helmet masks



Stainless-steel mask holder (incl. carrier plate) (for MSA and Dräger masks – Gallet system)	<b>330-727</b>
MSA (Avon/Schuberth) adapters for art. no. 330-727	<b>330-127</b>
Interspiro (Heros) adapters for art. no. 330-727	<b>330-128</b>
Helmet-mask holder for installation on dummy head (for Dräger and MSA masks)	<b>330-210</b>
Helmet-mask holder for installation on dummy head (for Interspiro masks)	<b>330-522</b>

## The Equipment Management program

### Program features

With our program, which we develop in-house, you can, inter alia, do the following:

- ❖ manage program users and user permissions
- ❖ manage equipment owners
- ❖ manage individuals associated with equipment owners
- ❖ manage type-specific test preferences
- ❖ manage test procedures
- ❖ manage equipment types (incl. test intervals)
- ❖ manage equipment data (incl. dates when tests are due)
- ❖ manage equipment with a limited service life
- ❖ perform equipment tests and save the recorded data
- ❖ manage stored data on equipment tests
- ❖ print test reports
- ❖ search for equipment that is due for testing
- ❖ use comprehensive reporting and statistics features
- ❖ create tests that can be activated if needed
- ❖ manage turnouts and training sessions
- ❖ manage any kind of equipment (*option*)
- ❖ make and manage lists of equipment to be tested (*option*)
- ❖ use barcodes to tag and identify pieces of equipment
- ❖ create user reports
- ❖ export reports in a variety of formats
- ❖ export and import data (standardized CSV format)
- ❖ collate data (*requires a central point of testing*)
- ❖ make and manage lists of equipment given out (*option*)
- ❖ set up and manage central points of testing (*option*)
- ❖ download program updates via an FTP connection
- ❖ capture electronic signatures by means of a signature pad

- ❖ back up data to USB drives
- ❖ perform and manage external cylinder fillings
- ❖ perform and manage external equipment tests
- ❖ hire out equipment (*option*)
- ❖ fill and pressure test cylinders (*option*)
- ❖ manage stock and do invoicing (*option*)

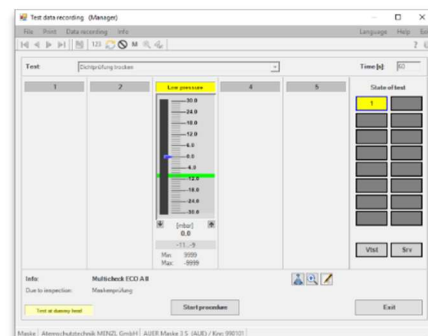
### Program options (non-exhaustive list)

- ❖ managing any kind of equipment
- ❖ performing/managing cylinder fillings
- ❖ hiring out equipment
- ❖ making/managing lists of equipment given out
- ❖ making/managing lists of equipment to be tested
- ❖ setting up/managing central points of testing
- ❖ managing stock and doing invoicing

### Program options are sold separately!

### Available UI languages

- ❖ English
- ❖ German
- ❖ Spanish
- ❖ Czech



Errors and omissions excepted! Technical specifications subject to change without notice!

